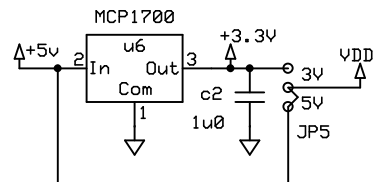
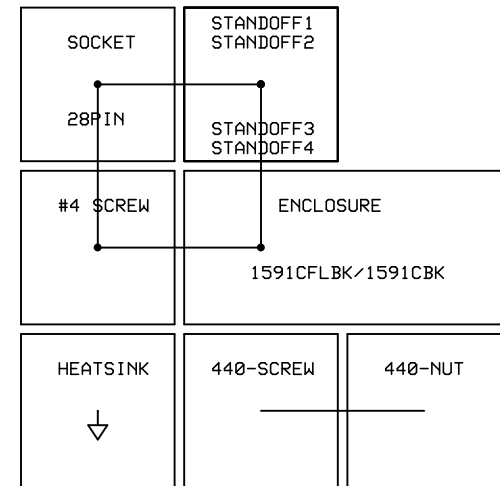


RELAYS

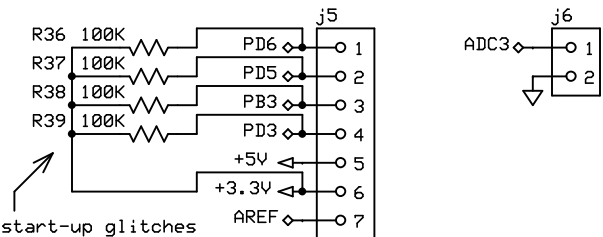
Note: OC1 and OC2 are dual use I/O pins, for the simultaneous external and internal control of the relays. Use processor ports PC4 and PC5 to read input state, and processor port PB1 and PD2 to drive outputs on OC1 and OC2, respectively.



<OPTION> 3.3V PERIPHERAL POWER



MECHANICAL PARTS



Resistors added to eliminate start-up glitches

j5, j6 <OPTION> BURIED PIN ACCESS

Vx Tech		
FALCON-AVR Controller		
V. Little	Rev V1A	Page 2/2
	June 23, 2017	